

**ACCORDING TO  
 DIN 18534  
 SEALING IS  
 MANDATORY!!!**

**Sanitär / Installation**

**OHA-Dichtix ½" acc. to DIN 18534**



Produktvideo



Item No.	Colour:	Description:
6635	yellow/black	OHA-Dichtfix ½" for the use of building plugs
6615	blue/black	OHA-Dichtfix ¾" for the use of building plugs

**Item No. 6635:**

**Description:**

OHA-Dichtfix ½", a 2-component solution (hard/soft). Particularly easy to install and easy to shorten.

**Technical features:**

- Seals inwards and outwards
- Suitable for almost all commercially available ½" building plugs and ½" wall washers
- Targeted collection of leaking and flowing water
- No destruction of the seal when removing the construction plug
- Permanent splash protection
- Easy, subsequent replacement of fittings
- acc. to DIN 18534-1

**OHA-Dichtfix-Combi-Set**



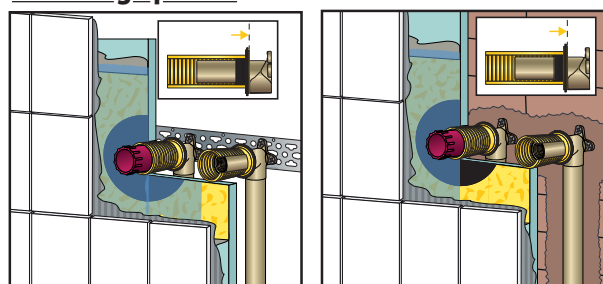
**Item No. 6660:**

**Description:**

OHA-Dichtfix-Combi-Set, a 2-component solution (hard/soft). This Set includes:

- 8 pcs. Dichtfix Bconstruction sleeves
- 4 pcs. Brass construction plug ½" red
- 4 pcs. Brass construction plug ½" blue
- acc. to DIN 18534-1

**Mounting options:**

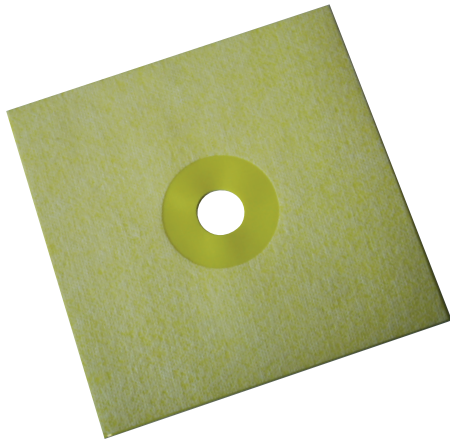


a: For drywall construction

b: For conventional wall mounting (wall variant)

## Sanitär / Installation

### OHA expansion zone cuff

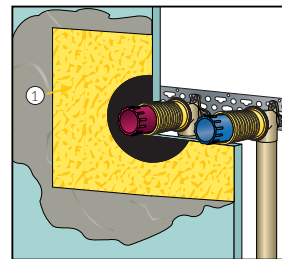


#### Item No. 6611:

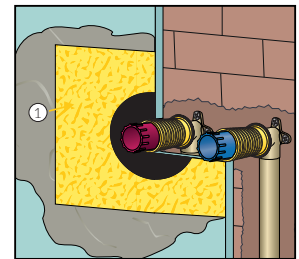
##### Description:

A perfect match is our expansion zone sleeve, dimensions: 150 x 150 x 0.6 mm Expansion zone diameter: Ø 50 mm and hole diameter of Ø 20 mm.

##### Mounting options:



a: For drywall construction



b: For conventional wall mounting (wall variant)

### OHA-Sealing-Sets



Item No. 6775  
OHA-Dicht-Set A



Item No. 6776  
OHA-Dicht-Set B



Item No. 6777  
OHA-Dicht-Set C

#### Item No. 6675 (Dichtset A):

#### Item No. 6676 (Dichtset B):

#### Item No. 6677 (Dichtset C):

##### Description:

OHA-Sealing-Sets, incl. Dichtfix and expansion zone cuff.

##### Technical features:

- 2-component solution (hard/soft)
- Particularly easy to install and easy to shorten.
- Seals inwards and outwards
- Suitable for almost all commercially available ½" building plugs and ½" wall washers
- Targeted collection of leaking and flowing water
- No destruction of the seal when removing the construction plug
- Permanent splash protection
- Easy, subsequent replacement of fittings
- Expansion zone sleeve, dimensions: 150 x 150 x 0.6 mm  
Expansion zone diameter: Ø 50 mm and hole diameter of Ø 20 mm.
- acc. to DIN 18534-1